

woodCircle „Communication & Annual Workshop Meeting of UNECE/FAO Forest Communicators’ Network”

Excursion, 18 December 2024

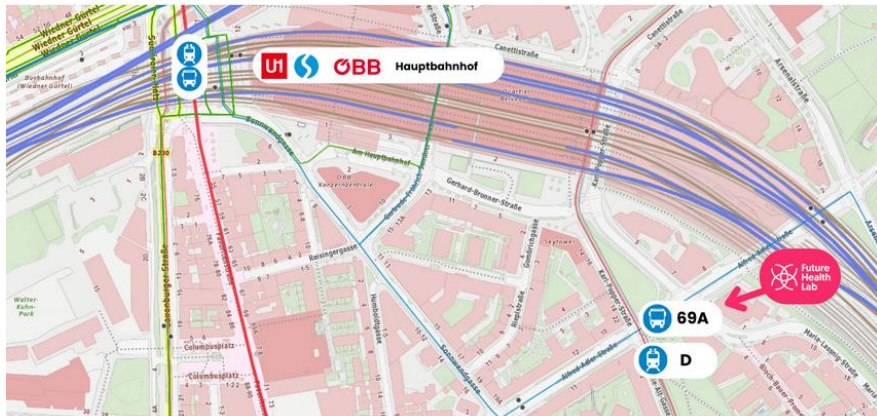
Stadtquartier „Sonwendviertel“

Organized by proHolz Austria, Bernd Höfferl

14:00

Meeting point: Future Health Lab, Alfred-Adler-Straße 1, 1100 Wien

5 min walk from „Vienna Central Train Station“ East / Wien Hauptbahnhof Ost (Karl-Popper-Straße)



U U-Bahn

U1 Südtiroler Platz-Hauptbahnhof (900m)

T Tram

D
O Alfred-Adler-Straße (120m)

B Bus

69A Alfred-Adler-Straße (120m)

120	309
169	N66
200	B23
209	B24
210	VAL1
13A	

Hauptbahnhof (700m)

T Trains

Wien Hauptbahnhof (700m)

14:05

Gleis 21 - Wood-concrete hybrid residential building

[Bloch-Bauer Promenade 22, 1100 Wien](#)

The self-managed residential building Gleis 21 in Vienna's Sonnwendviertel East, located on a former ÖBB (Austrian Federal Railways) site in the immediate vicinity of Vienna Central Station, was planned by eineins architektur and completed in 2019. In an assembly process, 34 residential and four commercial units were created, the floor plan and shape of which were designed according to the individual needs of the future residents. This also applies to the balconies assigned to the apartments, which also vary in size and location.

In order to enable this flexibility within the cost framework of subsidized housing, the planners relied on a wood-concrete hybrid construction and the best possible prefabrication of building components. While the ground

floor was built using in-situ concrete, the walls of the four upper floors consist of prefabricated wooden box elements. Hybrid floor slabs were applied for the first time after a two-year development phase allowing industrial prefabrication of composite components.

The high level of prefabrication enabled the ceiling/balcony elements to be installed quickly; this shows that flexible, individual design options and affordable housing are not mutually exclusive.

<https://www.proholz.at/zuschnitt/86/wohnprojekt-gleis-21>



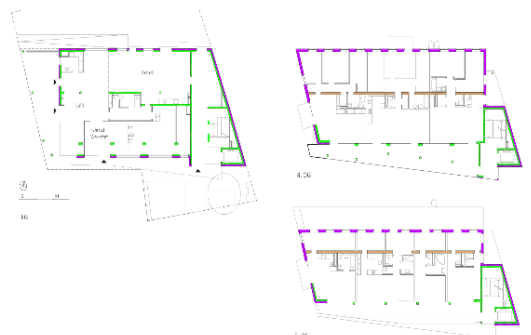
15:00

Bikes & Rails, Wohnbau, passive house
[Emilie-Flöge Weg 4, 1100 Wien](https://www.proholz.at/wienwood/holzbaupreis-wien/detail/bikes-and-rails)

The Bikes and Rails residential complex, with its 17 residential units in passive house standard, is characterized by its ecological focus (timber construction, bicycle café) and special social standards. The realization took place within the limited budget of Vienna's housing subsidies. The basement and ground floor as well as the winter garden in front with the staircase are made of concrete, with a purely wooden building attached to it with wooden frame walls and ceilings made of cross-laminated timber.

The construction is chosen in such a way that selective dismantling is possible. Bikes and Rails is a self-managed house and the first new building project by habiTAT, a rental house syndicate in Austria. The award winning residential construction shows new paths on several levels - social, technical, ecological and economic.

<https://www.proholz.at/wienwood/holzbaupreis-wien/detail/bikes-and-rails>



16:00 Ride to Vienna University of Technology

Karlsplatz 13, 1040 Wien
by Metro line U1 (red line) from Vienna Main Station (Hauptbahnhof) to
Karlsplatz (direction Leopoldau)

16:30 Introducing the „endowed professorship“ of the Austrian Wood Initiative

Prof. Juri Troy

The new endowed professorship “Design and Timber Construction in Urban Spaces” is one of three newly created professorships in Austria that are intended to make a significant contribution to the sustainable, circular use of wood and to strengthening timber construction in the interests of climate protection. In addition to research and teaching, this professorship represents a scientific contact point for politics, authorities, industry and commerce. It is funded by the Federal Ministry of Agriculture, Forestry, Regions and Water Management Austria with a total volume of 1.7 million euros over a period of five years.

17:00 Visiting [TU Wien Kuppelsaal](#)

Karlsplatz 13, 1040 Wien
The almost 200-year-old wooden construction of the university’s famous event hall.

Note:

The Dinner location - *Gmoakeller, Am Heumarkt 25* - is within 10 min walking distance from Karlsplatz. Alternatively, take Metro line U4 (green line) from Karlsplatz 1 stop to Stadtpark.

Contact numbers:

Magdalena Lackner-Unger: +43 664 8131738

Gerda Wolfrum: +43 664 1426852

Barbara Aschauer: +43 1 71100 607330